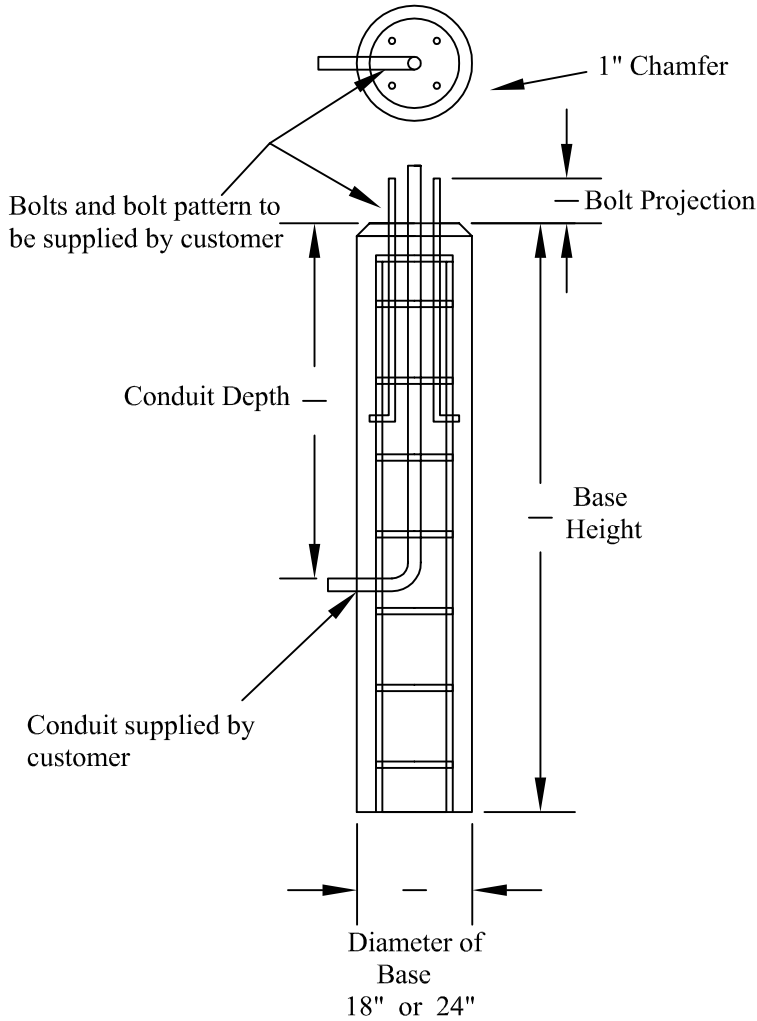


Swan's Concrete Light Pole Bases

General Notes:

- 1) Concrete 4000 psi 28 days
- 2) Stirrups are #3 bar $\frac{3}{8}$ " rebar with 15" diameter on 18" LPB and 21" diameter on 24" LPB
- 3) Stirrups spaced 3" from the top, 6" inches from top stirrup, 12" for all proceeding stirrups
- 4) Vertical rebar is #4 bar $\frac{1}{2}$ " rebar Grade 60



Diameter of base - 18" / 24"

Number of Bases _____

Base height _____

Diameter of bolts _____

Size of anchor bolts _____

Bolt projection _____

Size of conduit _____

Conduit depth _____

Conduit Pattern

Quantity _____	Quantity _____	Quantity _____	Quantity _____	Quantity _____



Phone: (270) 854-5324
FAX: (207) 854-1023

674 Bridgton Rd
Westbrook, ME 04092

E-mail:
info@swansconcrete.com

Scale - 1 : 20

Page - 1 / 1